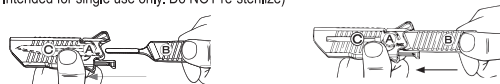


INSTRUCTIONS FOR USE

techno[®] cut^{HPRO}
Cartridge-Blade Management System
 "ALL IN ONE" ATTACHES-DETACHES-PROTECTS

A. ATTACHING THE **techno[®] cut^{HPRO}** Cartridge-Blade Management System

Remove from packaging. (Sterile only if package is NOT opened, damaged or broken. Intended for single use only. Do NOT re-sterilize)



1. Insert scalpel handle (B) into the back end of the Blade Management System (A). Ensure the handle is turned in the correct direction so as to engage into the blade as with typical blade loading.
2. Push handle (B) forward – it will be guided towards the blade (C) and will engage the blade. NOTE – the surgical blade will attach to the handle exactly as a blade would attach directly to a standard scalpel handle.
3. Push the handle fully forward until a loud 'click' is heard. Check VISUALLY to ensure the blade is attached. If the blade is properly attached the handle cannot be pulled out of the cartridge.

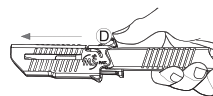
B. EXPOSING THE BLADE



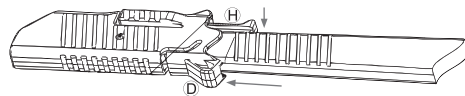
1. Place thumb on sheath clip (D)
 Pull back with slight downward force to expose blade for use. Pull sheath backwards towards rear of the scalpel handle as far as it goes. Apply slight force to lock (F) to prevent movement of sheath during a procedure. (This is only required if grip is solely on sheath and a stabbing force is applied).

C. CLOSING THE SHEATH AND COVERING THE BLADE

1. Place thumb behind sheath clip (D). Push forward until a loud click is heard and felt. Visually confirm the sheath has fully covered the surgical blade
2. Repeat process as required during use and passing.



D. DETACHING THE **techno[®] cut^{HPRO}** Cartridge-Blade Management System



1. A. Two handed method (ambidextrous)
 Hold scalpel handle in either hand with blade pointing away from your body and with sharp edge facing right. With right hand thumb on blade-removing lever (H) and left hand thumb on sheath clip (D) push down and forward simultaneously. Blade Management System will safely eject from handle with blade safely housed within the sheath.
- B. One handed method (right hand only)
 Hold Scalpel in right hand with blade pointing away from your body and with sharp edge facing right. With thumb on sheath clip (D) and forefinger on blade – removing lever (H), push down and forward simultaneously. (Note – the lever pushes back of the blade out and away from the handle with used blade safely housed within the sheath.)

Caution:

Blade is extremely sharp. Handle with care. Always place the Cartridge in "CLOSED" position when passing and when not in use. Keep hands away from open end to avoid injury.

Sterility is guaranteed if package is not opened or damaged

After use, dispose of product in puncture resistant container as per local standards and guidelines for handling and disposal of sharps.

Avoid direct contact of blade with corrosive local Anesthetic.

Single use only. Re-use of product may lead to cross contamination/infection.

Avoid using lateral pressure while cutting with blade to avoid blade breakage.

Store in a clean, dry and insect free place

Avoid exposure to excessive heat and corrosive fumes

REPORTING OF SERIOUS ADVERSE EVENTS:

- In case of any serious adverse events, please report the same to E-mail : info@hmdhealthcare.com
- For product used in EU also report to the competent authority of the Member State in which the user and / or patient is established.



NIRAJ INDUSTRIES PVT. LTD.
 923, SECTOR-68, IMT
 FARIDABAD-121004, HARYANA, INDIA
 M.L.MFG/MD/2022/000708 Made in India



Manufactured under licence of Medi-Safe (Pty)Ltd (South Africa)
U.S. patent No : 8,931,181

Symbols Glossary

- Do not use if package is damaged
- Caution
- Do not re-use
- Consult instructions for use
- Not made with natural rubber latex
- Medical Device
- Keep away from sunlight
- Keep dry
- Manufacturer
- Use-by-date
- Batch code
- Catalog number
- Single Sterile Barrier System
- Sterilized using ethylene oxide
- Date of Manufacturer
- Do not re-sterilize