

dispojekt



Single use hypodermic syringe with safety needle

Protects you from
needle stick injuries.



Features

- Equipped with a Safety SIP (Sharp Injury Prevention) Shield, safeguarding healthcare workers from accidental needle stick injuries (NSI's), protecting them from injuries and transmission of blood borne diseases.
- SIP shield doesn't allow the needle to be exposed anytime. The needle can be closed before and after procedure, assisting healthcare workers with movement between patients.
- Soft closing allows for no blood spill and restrict any aerosols contaminating the environment.
- Transparent safety mechanism can be activated by using a single hand, allowing healthcare workers to easily use the syringe while maintaining control over the safety mechanism.
- Audible click sound confirms locking of safety device by gently pressing the used syringe against a hard surface. Thus, making the syringe non-reusable.
- Does not require a change in injection technique, so no need for additional training thus saving cost and resources.
- In house manufactured -siliconized beveled needle reduces penetration and gliding force, thus minimizes discomfort enhancing patient safety.

Production

- The assembly machine is equipped with stations, which not only facilitates double siliconization but also provides better needle strength ensuring smooth penetration.
- The Cannula bend inspection and blockage test is done through automated vision inspection camera, to deliver free flow of medicament, a mark of consistent quality practice.



CAPACITY	TYPE OF NOZZLE	STANDARD NEEDLE DIMENSIONS			
2 ml.	Luer mount/ luer lock with central nozzle	24G X 1"	23G X 1"	23G X 1 1/2"	22G X 1"
		0.55 x 25	0.60 x 25	0.60 x 38	0.70 x 25
3ml	Luer mount/ luer lock with central nozzle	22G x 1 1/4"	22G x 1 1/2"	21G x 1 "	21G x 1 1/2"
		0.70 x 32	0.70 x 38	0.80 x 25	0.80 x 38
5ml	Luer mount/ luer lock with central nozzle	24G X 1"	23G X 1"	23G X 1 1/2"	22G X 1"
		0.55 x 25	0.60 x 25	0.60 x 38	0.70 x 25
10ml	Luer mount with eccentric nozzle/ Luer lock with central nozzle	22G x 1 1/4"	22G x 1 1/2"	21G x 1 "	21G x 1 1/2"
		0.70 x 32	0.70 x 38	0.80 x 25	0.80 x 38

Caution

Reuse of product may lead to cross contamination /infection.

Store in clean, dry and insect free place.

Avoid exposure to acidic /corrosive fumes to avoid corrosion/rust.

Conform to: ISO 23908
(for sharp injury prevention feature)

Warning

Do not use if the pack is previously open or damaged.
Use after checking Expiry Date.
Do not attempt to re-sterilise and re-use

Shelf Life

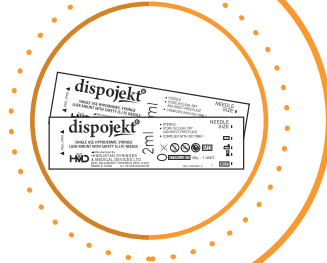
The Shelf Life of the product is 5 years from manufacturing

Instructions for use

Open the pack and take out syringe.



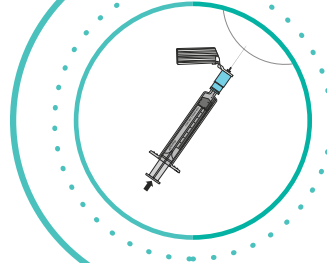
STEP - 1



Inject the Medicament.



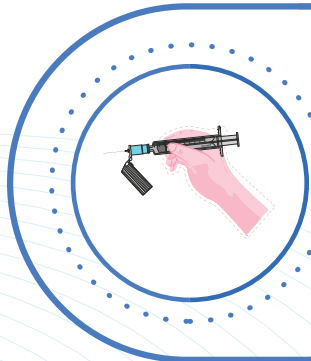
STEP - 5



Pull back the hinged cover to expose the (S.I.P.) needle.



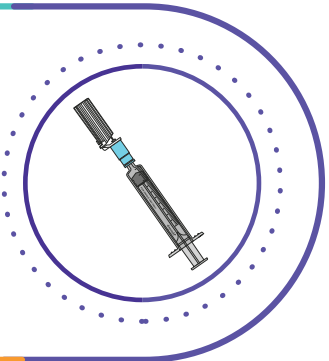
STEP - 2



Close the safety (S.I.P.) needle cover immediately after use.



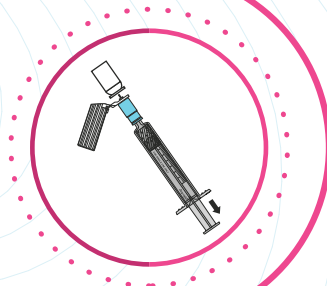
STEP - 6



Insert the needle into the vial and withdraw fluid / medicament.



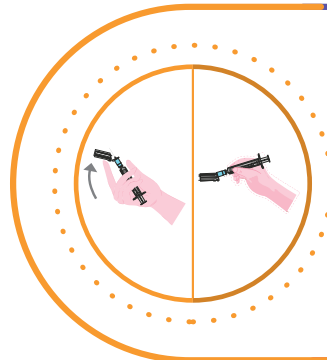
STEP - 3



Activate locking mechanism of safety (S.I.P.) needle cover, press the needle cover against a hard surface or by a finger.



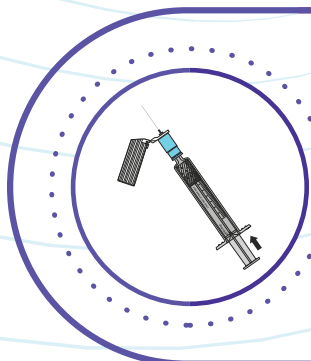
STEP - 7



Flick barrel to move the air bubble to top. Push the plunger for desired dosage and expel air bubble.



STEP - 4



Dispose of the syringe in a sharps container.



STEP - 8



Scan for
3D Video



Scan for
Product Film



Scan to watch
the tutorial

Taking care of those who take care of us

from the makers of

DISPO VAN[®]



HINDUSTAN SYRINGES & MEDICAL DEVICES LTD.

174/25, Ballabgarh, Faridabad (Haryana), Pincode-121004. India | www.hmdhealthcare.com | Info@hmdhealthcare.com |