



Taking care of those who take care of us



Hi There!

About HMD

Established in 1957, Hindustan Syringes and Medical Devices Ltd. also known as HMD is a leading global manufacturer of innovative medical devices, with 9 highly automated manufacturing facilities & a committed and experienced workforce of more than 3500+ employees in a covered area of one million square feet manufacturing 20 million medical devices daily. HMD is humbled to be equipped with a widespread distribution with a network of 4000+ distributing partners in 120 countries assisting in ready availability of medical devices even in the most remote areas. HMD achieved a milestone of supplying 1.75 billion syringes of the total 13.3 billion Covid-19 Vaccines. 13% of vaccination was administered worldwide was from HMD's Kojak Seling (AD Syringes). HMD is constantly pushing its boundaries to achieve its global vision and long term goal of becoming "Top 5" in each of its business segments by building a unique competitive advantage in key businesses.

This year's offerings are divided into five major categories

Injection Safety

- Single use Syringe with Safety Needle
- Dispo Van Hypodermic Syringe and Needle
- Unolok Hypodermic Syringe and Needle
- Kojak Seling Auto Disable Syringe
- Kojak Safety Box Sharps Container
- Dispocann Alcohol Swabs

Diabetes

- Dispo Van Insulin Syringes
- Dispo Van Insulin Pen Needle

Infusion

- Cathy + I.V. Cannula
- Kitkath + I.V. Cannula
- Dispoway + 3 Way Stop Cock with/without Extension Tubing
- Unolok + Winged Infusion Set with/without Safety

Pathology

- Vaku 8 Blood Collection Tube
- Vaku 8 Blood Collection Needle
- Vaku 8+ Winged Blood Collection Set with/without Safety

Surgery

- Technocut Surgical Blades
- Technocut Surgical Scalpel

SERVING HUMANITY





SINCE 1957



INJECTION SAFETY

Single use Syringe with Safety Needle

Dispo Van Hypodermic Syringe and Needle

Unolok Hypodermic Syringe and Needle

Kojak Selinge Auto Disable Syringe

Kojak Safety Box Sharps Container

Dispocann Alcohol Swabs



dispojekt

Safety Syringe and Needle

With **SIP** SHIELD



Features

- Equipped with a Safety SIP (Sharp Injury Prevention) Shield, safeguarding healthcare workers not only from accidental needle stick injuries (NSI's), but also from transmission of blood borne diseases.
- SIP shield doesn't allow the needle to be exposed anytime. The needle can be closed before and after procedure, assisting healthcare workers to move freely between the patients. Soft closing allows for no blood spill and restrict any aerosols contaminating the environment.
- Translucent safety mechanism can be activated by using a single hand, allowing healthcare workers to easily use the syringe while maintaining control over the safety mechanism.
- Audible click sound confirms locking of safety device by gently pressing the used syringe against a hard surface. Thus, making the syringe non-reusable.
- Does not require a change in injection technique, so no need for additional training thus saving cost and resources.
- In house manufactured - siliconized beveled needle reduces penetration and gliding force, thus minimizes discomfort enhancing patient safety.

SIP SHIELD

The SIP Shield is a key safety feature of Dispojekt. It covers and shields the needle before and after use, preventing accidental needlestick injuries, even during its disposal.

Product Range

CAPACITY	TYPE OF NOZZLE	STANDARD NEEDLE DIMENSIONS			
2 ml.	Luer mount	24G X 1"	23G X 1"	23G X 1 ¹ / ₂ "	22G X 1"
		0.55 x 25	0.60 x 25	0.60 x 38	0.70 x 25
		22G x 1 1/4"	22G x 1 1/2"	21G x 1 "	21G x 1 1/2"
		0.70 x 32	0.70 x 38	0.80 x 25	0.80 x 38
3ml	Luer mount	24G X 1"	23G X 1"	23G X 1 ¹ / ₂ "	22G X 1"
		0.55 x 25	0.60 x 25	0.60 x 38	0.70 x 25
		22G x 1 1/4"	22G x 1 1/2"	21G x 1 "	21G x 1 1/2"
		0.70 x 32	0.70 x 38	0.80 x 25	0.80 x 38
5ml	Luer mount	24G X 1"	23G X 1"	23G X 1 ¹ / ₂ "	22G X 1"
		0.55 x 25	0.60 x 25	0.60 x 38	0.70 x 25
		22G x 1 1/4"	22G x 1 1/2"	21G x 1 "	21G x 1 1/2"
		0.70 x 32	0.70 x 38	0.80 x 25	0.80 x 38

Caution

Reuse of product may lead to cross contamination/ infection.

Store in clean, dry and insect free place

Avoid exposure to acidic/corrosive fumes to avoid corrosion / rust

Warning

Do not use, if the pack is previously open or damaged

Use after checking the Expiry Date

Do not attempt to re-sterilize and re-use

Shelf life

The Shelf Life of the product is 5 years from manufacturing

Single use hypodermic needles also sold separately with blister pack.



Scan to View Product Video

DISPO VAN[®]

Hypodermic Syringe and Needle

India's Most Trusted Brand



Features

- Luer mount Dispo Van, India's top syringe brand, is made using fully automated processes. This 3-part syringe, with Gasket, Plunger, and Barrel, meets daily physician needs.
- Our manufacturing lines employ high-standard Vision Inspection systems to verify product compliance, checking for Needle Tip, Glue Bead Formation, Needle Bend, and Needle Cover presence in each piece.
- Consisting of in-house manufactured Cannula, each piece is checked for its beveled tip holding consistency as the key formula for mass production of syringes.
- The syringe barrel holds medication or fluid for injection, marked with graduation scales for accurate dose measurement.
- The plunger pushes medication or fluid from the syringe barrel through the needle. In the Indian market, it's dark grey for brand distinction, while the international market has a transparent option.
- The tip of the needle has a thin wall and three facet lancet point. Needle is well siliconized to reduce friction for comfortable insertion.

DISPO VAN[®]

Launched in 1984, Dispo Van is India's first integrated Syringe and Needle brand. The polypropylene based syringe replaced its predecessor Glass Van (glass syringe) to pave the way for best and most used syringe brand of India. A household name, Dispo Van has set a benchmark for the Indian Market and has aided in growth of medical infrastructure through its, quality, affordability and ready availability in the most isolated areas in the country.

Product Range

Capacity	Type of Nozzle	Standard Needle Dimensions
1 ml (T.B)	Luer mount/Luer lock with central nozzle	26G x 1/2" 0.45 x 13
2 ml	Luer mount/Luer lock with central nozzle	24G x 1" 23G x 1" 23G x 1/2" 22G x 1" 0.55 x 25 0.60 x 25 0.60 x 38 0.70 x 25 22G x 1/4" 22G x 1/2" 21G x 1" 21G x 1/2" 0.7 x 32 0.70 x 38 0.8 x 25 0.8 x 38
3ml	Luer mount/Luer lock with central nozzle	Specifications same as 2ml
5ml	Luer mount/Luer lock with central nozzle	Specifications same as 2ml
10ml	Luer mount with eccentric nozzle Luer lock with central nozzle	22G x 1/4" 22G x 1/2" 21G x 1/2" 20G x 1/2" 0.7 x 32 0.70 x 38 0.8 x 38 0.9 x 38 Same as above
20ml	Luer mount with eccentric nozzle Luer lock with central nozzle	Specifications same as 10ml
50ml	Luer mount with eccentric nozzle Luer lock with central nozzle	Without needle

Caution

Reuse of product may lead to cross contamination/ infection.

Store in clean, dry and insect free place

Avoid exposure to acidic/corrosive fumes to avoid corrosion / rust

Warning

Do not use, if the pack is previously open or damaged

Use after checking the Expiry Date

Do not attempt to re-sterilize and re-use

Shelf life

The Shelf Life of the product is 5 years from manufacturing

- Conform to : ISO 7886-1/IS: 10258 standards

Single use hypodermic needles also sold separately with blister pack.



Scan to View Product Page



UNOLOK[®]

Hypodermic Syringe and Needle

For Secure Fitment



Features

- Unolok Syringes and Needle comprises of a Luer Lock hub, for a more secure and better fitment. The syringes are available, both with and without needle and are synonymous with quality.
- A siliconized rubber piston ensures smooth injection and aspiration motion without scratching the plastic barrel. Inner wall tolerance is precisely controlled during molding for this purpose.
- Unolok Syringes are preferred for usage by dentists & cardiologists as they require a more steady and secure solution to meet their requirements.
- Owing to superior grades of Polypropylene, high clarity plunger & barrel are molded for better visibility of the injectable and clearly marked graduation scales.
- The tip of the needle has a thin wall and three facet lancet point. The in-house manufactured cannula is well siliconized to reduce friction resulting in smooth penetration and withdrawal of the needle.

Luer Lock

Luer Lock nozzle present in Unolok syringes ensures a secure needle fitment. The secure fitment of Luer Lock syringes make them the right choice for more complicated procedures making them the ideal choice for Cath Labs and Dentistry's.

Product Range

Capacity	Type of Nozzle	Standard Needle Dimensions
1 ml (T.B)	Luer mount/luer lock with central nozzle	26G x 1/2" 0.45 x 13
2 ml	Luer mount/luer lock with central nozzle	24G x 1" 0.55 x 25 23G x 1" 0.60 x 25 23G x 1 1/2" 0.60 x 38 22G x 1" 0.70 x 25
3ml	Luer mount/luer lock with central nozzle	22G x 1 1/4" 0.7 x 32 22G x 1/2" 0.70 x 38 21G x 1" 0.8 x 25 21G x 1 1/2" 0.8 x 38
5ml	Luer mount/luer lock with central nozzle	Specifications same as 2ml
10ml	Luer mount with eccentric nozzle Luer lock with central nozzle	Specifications same as 2ml
20ml	Luer mount with eccentric nozzle Luer lock with central nozzle	22G x 1 1/4" 0.7 x 32 22G x 1/2" 0.70 x 38 21G x 1 1/2" 0.8 x 38 20G x 1 1/2" 0.9 x 38
50ml	Luer mount with eccentric nozzle Luer lock with central nozzle	Same as above
		Specifications same as 10ml
		Without needle

Caution

Reuse of product may lead to cross contamination/ infection.
Store in clean, dry and insect free place
Avoid exposure to acidic/corrosive fumes to avoid corrosion / rust

Warning

Do not use, if the pack is previously open or damaged
Use after checking the Expiry Date
Do not attempt to re-sterilize and re-use

Shelf life

The Shelf Life of the product is 5 years from manufacturing

- Conform to ISO 7886-1/IS 10258 standards

Single use hypodermic needles also sold separately with blister pack.



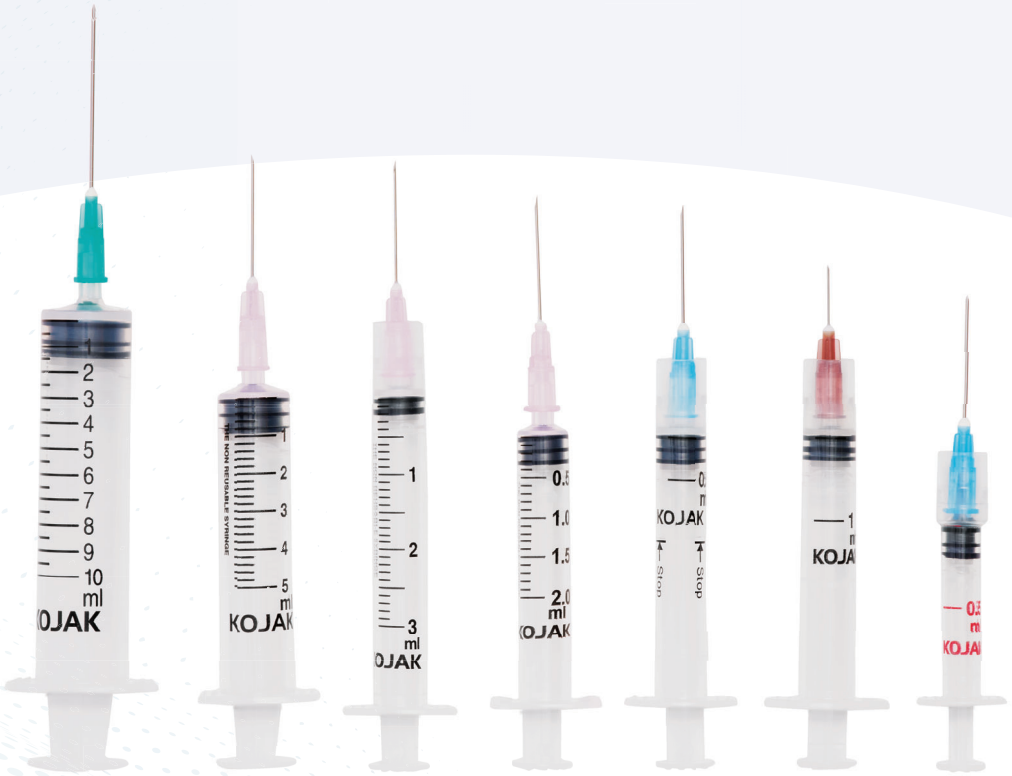
Scan to View Product Page



KOJAK[®]
SELINGE

Auto Disable Syringe

Facilitates Reuse Prevention



Features

- Kojak Selinge Auto Disable Syringes, also known as the K1 design are equipped with a unique Ring & Lock mechanism in its barrel, which is designed to prevent reuse of syringes.
- The design ensures single-use by locking the plunger after its use, preventing reuse and potential plunger breakage, reducing disease transmission risk, and promoting safe injection practices.
- These syringes are designed with eco-friendly materials, considering the environmental impact of their disposal.
- Kojak Selinge, the world's leading AD Syringe brand, offers options for both Immunization and Curative purposes. Various sizes and capacities cater to diverse medical applications, benefiting developing healthcare markets.
- These syringes are typically designed to meet international standards and guidelines for Safe Injection Practices. They are designed to be utilized best with Kojak Safety Boxes.
- Equipped with Fixed Needle barring its reuse, Kojak Selinge are blister packed and sealed in peel open type medical grade paper packing.

Product Range

FOR IMMUNISATION PRODUCT RANGE

Size	0.1 ml		0.2 ml	0.25 ml	0.3 ml	0.5 ml	1 ml	
Needle Size	26G x 3/8" 0.45x10	27G x 3/8" 0.40x10	23G x 1" 0.60x25	23G x 1" 0.60x25	23G x 1" 0.60x25	23G x 1" 0.60x25	26G x 1/2" 0.45x13	24G x 1" 0.55x25
WHO PQS No.	E008/045		E008/092	E008/095	E008/084	E008/039	E013/056	

• Conform to : ISO: 7886-3, IS 10258-3

• Auto Disable Syringe with Fixed Needle

FOR CURATIVE PRODUCT RANGE

Size	2 ml	3 ml	5 ml	10 ml	20 ml
Needle Size	26G x 1/2" 0.45x13	24G x 1" 0.55x25	23G x 1" 0.60x25	22G x 1 1/4" 0.70x32	21G x 1 1/2" 0.70x32
WHO PQS No.	E013/001	E013/001	E013/018	E013/020	E013/039

• Conform to : ISO: 7886-4

• Auto Disable Syringe with/without-Fixed/Detachable Needle

Caution

Don't push the plunger before taking the vaccine/medication.

Insert the needle in the vial and pull the plunger slowly until you notice restriction. Do not pull the plunger further after restriction

Shelf life

The Shelf Life of the product is 5 years from manufacturing



Scan to View Product Video



KOJAK[®]

Safety Box

For Safe Disposal



Features

- Promoting safe disposal of Medical Sharps, Kojak Safety Boxes are made of Duplex Kraft Board with thickness over 1mm and grammage above 850 gsm.
- Easy to use and assemble, the directions to set a Kojak Safety Box is shown in both text and pictorial form on the box itself.
- The 8-step process of assembling a box doesn't take more than a couple of minutes to set the box which is referenced by a code of sequence on all of its flaps by the ascending direction in which it has to be setup.
- The box features a central handle to prevent spillage during transportation and aid users in holding it during movement or disposal.
- Heavy-cardboard boxes offer cost-effective storage and transportation compared to Plastic Sharps Containers, providing the same functionality.
- Conforms to WHO standard WHO/PQS/E10/SBO1.1 The WHO PQS Code is E010/006.

Due to Indian government regulations, we supply white safety boxes in the Indian market. In the International market, we offer safety boxes in yellow or according to market preferences.

Product Range

Specification	5 ltr	10 ltr
Material	Yellow Duplex Craft Box	Yellow Duplex Craft Box
Thickness of walls	Over 1.0mm	Over 1.0mm
Grammage	Over 850 gsm	Over 850 gsm
Weight Fully Assembled	275 g (min) (5 ltr)	450 g (min) (10 ltr)
Syringe Hole Diameter	38mm (5 ltr)	42mm (10 ltr)
Cartons	5 ltr (25 pcs)	10 ltr (20 pcs)
Shipping Weight	5 ltr 7.5 kg (min)	10 ltr 10 kg (min)

CAPACITY

S. No.	Size of No. Syringe	With Needle No. Of Syringes Without Agitation		Without Needle No. Of Syringes Without Agitation		With Needle No. Of Syringes With Agitation		Without Needle No. Of Syringes With Agitation	
		5 ltr	10 ltr	5 ltr	10 ltr	5 ltr	10 ltr	5 ltr	10 ltr
1.	0.5ml/2ml	100	200	275	630	150	275	295	650
2.	5ml	65	120	140	320	120	190	170	360



Scan to View Product Page

DISPOCANNTM

Alcohol Swabs

For Site Preparation



Features

- Dispo Cann Alcohol Swabs, with 70% Isopropyl Alcohol, contain an optimal disinfectant volume to prevent bacterial growth, reduce contamination, and enhance medication safety.
- Our Alcohol Swabs are produced in a Class 7 Clean Room using fully automated machines equipped with eye mark sensors to ensure even solution distribution on the pads.
- Ensuring top-quality consistency is our priority, we daily discard the first 2 shots of produced samples to prevent any dry pieces from reaching our customers.
- Dispo Cann Alcohol Swabs, manufactured in a clean environment, are sealed in a four-layer wrapper that ensures an airtight seal to prevent drying out and leakage.
- Prior to injection, using Dispo Cann alcohol swabs to clean drug injection sites reduces the likelihood of abscesses and other skin and soft tissue infections, thus promoting improved injecting hygiene.
- Ready to use, our Alcohol Swabs is manufactured at a size of 30 x 60mm and can be used in variety of applications include Labs, Clean Rooms, Households, Hospitals and even Office applications.

An Improvement over Cotton Balls

Alcohol swabs come in sealed packets for single use. Therefore, there are no chances of these being infected with bacteria from the surroundings. On the other hand, cotton balls generally come in continuous rolls. Once the roll is opened, it is susceptible to dust particles and bacteria in the surroundings. This makes patients prone to infections at the injection site. We thereby encourage using alcohol swabs.

Contraindication

Do not apply on irritated or hypersensitive skin, cuts, burn, wound and/or on mucous membrane.

Warning

For external use only. Do not use in eyes. Keep out of reach of children. If swallowed, get immediate medical help, or contact a poison control center.

Shelf life

The shelf life of this product is 5 years from the date of manufacture.



Scan to View Product Page





DIABETES

Dispo Van Insulin Syringes

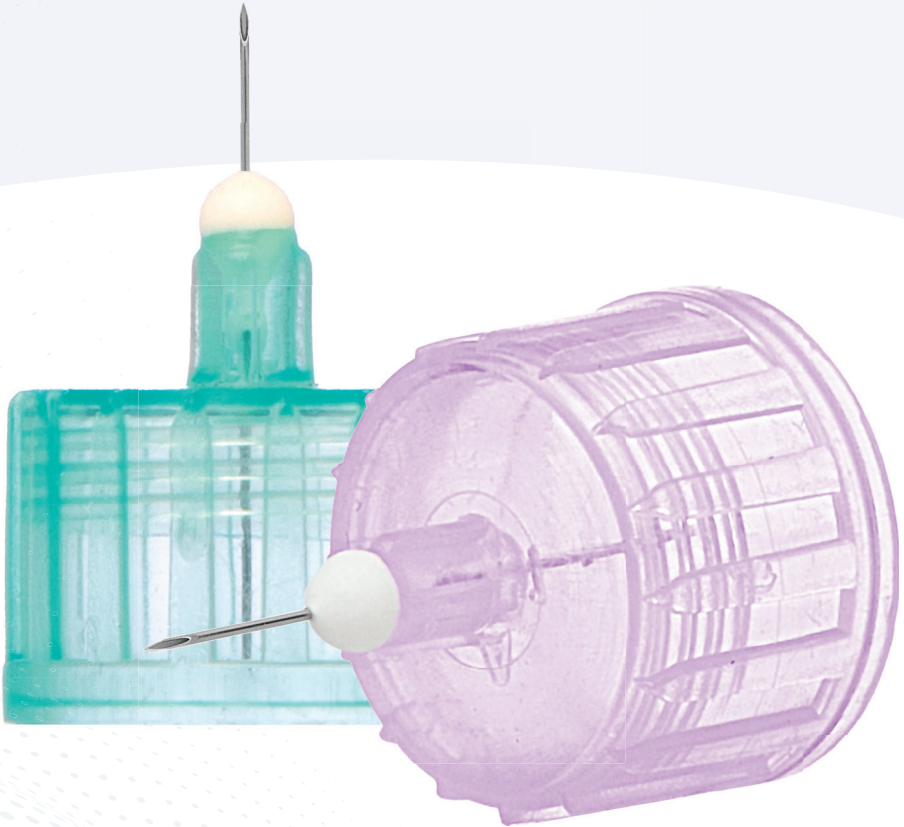
Dispo Van Insulin Pen Needle



DISPO VAN[®]

Insulin Pen Needle

With Precision Engineering



Features

- India's first Insulin Pen Needle, assembled on fully automated machines with multiple vision inspection to check needle tip, glue bead fixation and height, and cover presence.
- Extra thin wall which allows for a larger internal diameter. This design minimizes the force required to expel insulin thereby increasing medication flow rate, making injections more comfortable.
- Insulin pen needles are designed to be universally compatible with a wide range of insulin pen devices from various manufacturers, allowing users to choose the pen needle that suits their needs, and is affordable.
- Multi-level, tapered point which enhances sharpness and reduces the perceived pain during injection. Siliconized needle adds to the convenience as well.
- Hub is designed ergonomically for improved skin contact and better grip for increased efficiency and comfort. It has a threaded or screw-on design, allowing for secure attachment to any Insulin Pen.
- EO Sterilized, is available in consumer-friendly pouches of 5 pieces and hospital friendly economical box of 100 pieces.

Product Range

Needle	Colour Code	Needle Length		Needle Diameter
31 G	Purple	5mm	3/16 inch	0.25 mm
32 G	Green	4mm	5/32 inch	0.23 mm

Caution

Check the compatibility between the pen needle and the pen to be used for administering the medication.

Always mount a new needle before each injection and dispose of it after single use.

Store in clean, dry and insect free place.

Avoid exposure to acidic/corrosive fume to avoid corrosion/ rust.

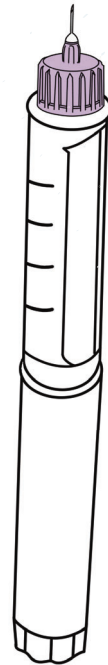
Shelf Life

The shelf life of product is 5 years from date of manufacturing.

Warning

Do not use if the pack is previously opened or damaged, needles should be discarded preferably in a sharp container.

Reuse of the Needle can lead to pain and can also contribute to skin hypodermic diseases.

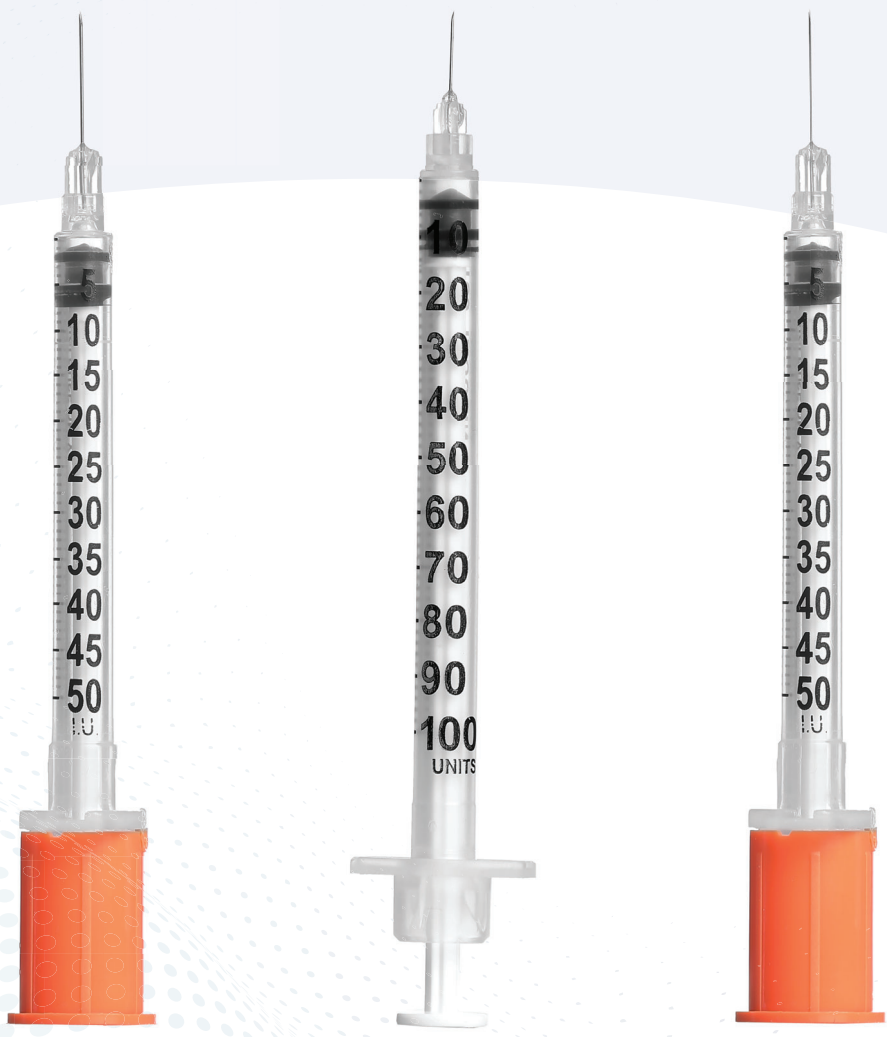


Scan to View Product Video

DISPO VAN[®]

Insulin Syringe

Making Diabetes Management Affordable



Features

- India's most trusted brand facilitates precise insulin dosing and ease of use while making Insulin delivery affordable, and reliable.
- The Insulin syringe includes an Ultrafine & Sharp needle integrated to the syringe barrel, facilitating a comfortable insertion. Designed to be universally compatible with various insulin vials and cartridges from different manufacturers.
- Presence of low dead space helps in avoiding any wastage related to medication and ensures accurate dosage, making it economical.
- Manufactured in Fully Automated lines equipped with multiple Vision Inspection systems to check for Needle Tip Formation, Glue Bead Formation, Needle Straightness and Presence of Cap.
- Available in both U-40 & U-100 graduated scales, to meet your every need. It also comes in 29G, 30G and 31G in both 0.5 and 1ml.
- Available in both economical Multi- Pack (10 pieces) & Unit-Pack.

Product Range



Needle Size	U-40	U-100	U-40	U-100	U-40	U-100	U-40	U-100	U-40	U-100	U-40	U-100
	29Gx1/2" 0.33 x 13mm		29Gx1/2" 0.33 x 13mm		30Gx5/16" 0.30 x 8mm		30Gx5/16" 0.30 x 8mm		31Gx3/16" 0.25 x 5mm		31Gx3/16" 0.25 x 5mm	
	0.5/1ml		0.5/1ml		0.5/1ml		0.5/1ml		1ml		1ml	
Description	Multipack		Unitpack		Multipack		Unitpack		Multipack		Unitpack	

- Conform ISO: 8537 IS: 12227 standards

Precaution

Before use check the integrity of tamper proof heat-stacked sealing where the end-caps and barrel are locked (multi pack). Twist off the bottom cap and the needle cover to expose the plunger and the needle respectively.

Pull straight off to avoid damaging needle point. Any harm to the needle may cause pain to the user, due to the tip being damaged.

Warning

Do not share syringes to avoid cross contamination.

Do not attempt to re-sterilise or reuse.

Shelf Life

The shelf life of product is 5 years from date of manufacturing.



Scan to View Product Page



INFUSION

Cathy + I.V. Cannula

Kitkath + I.V. Cannula

Dispoway + 3 Way Stop Cock with/without Extension Tubing

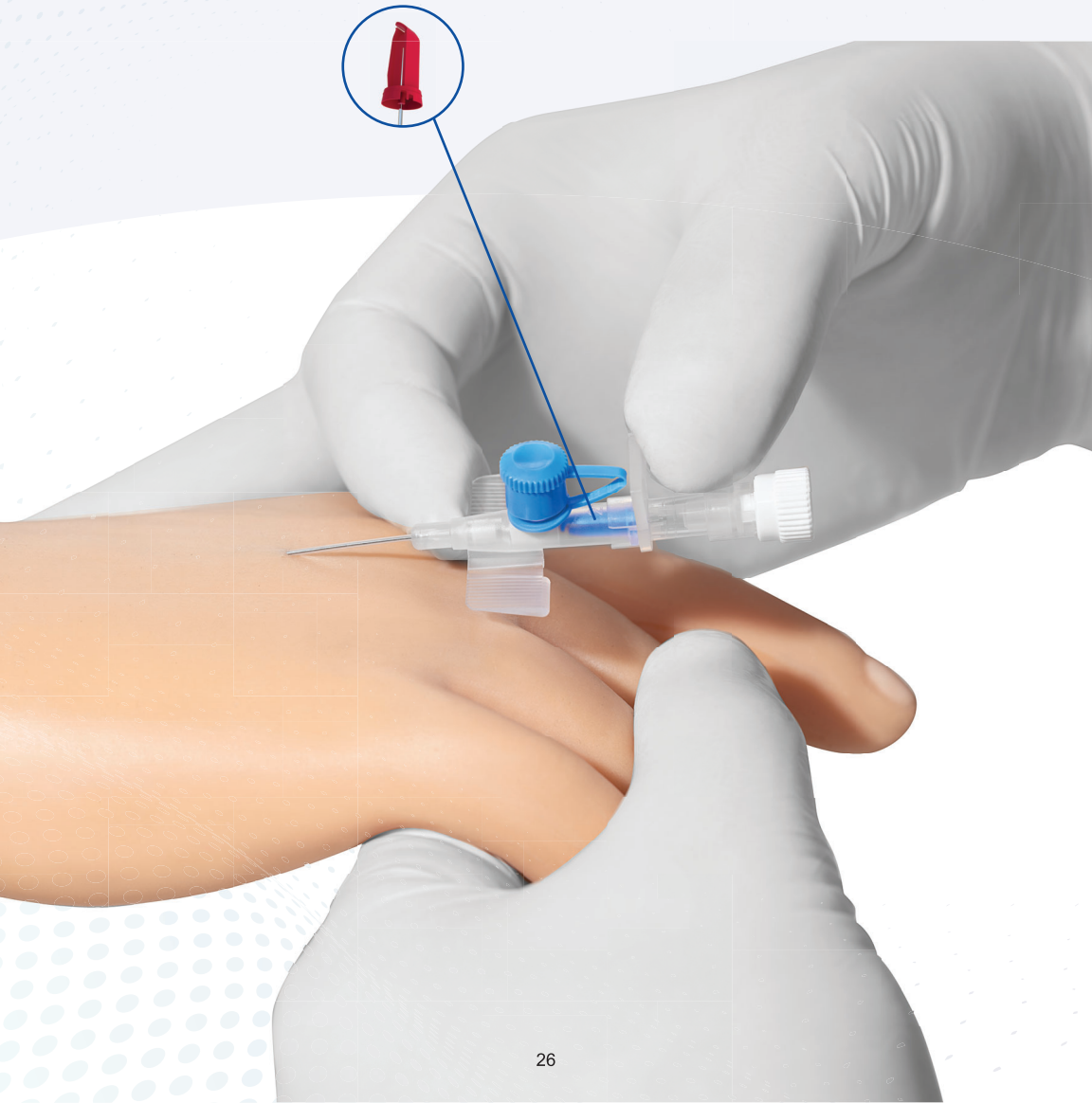
Unolok + Winged Infusion Set with/without Safety



Cathy[®] †

Safety I.V. Cannula

with SIPCLIP[™]



Features

- The Volex based PUR catheter, Cathy, and Cathy+ I.V. Cannula offers extended indwelling period along with exceptional kink recovery properties reduces medicine flow issue thus minimizing complication.
- High first attempt success rate of cannulation eases vein penetration with only a few cannula changes during patient's stay ensures comfort for both patients and administrator.
- Smooth catheter surface and tip reduce thrombogenesis and blood accumulation, enhancing blood flow through reduced turbulence. Automatic Vision Inspections ensure tip quality, straightness, and length.
- Angled and grooved wings help in easy fixation of the cannula in the patient's body. It also helps in preventing the I.V. Cannula from any movement while combatting it to roll over.
- The three-facet cut needle point allows gentle insertion, reducing force jerks and the risk of vein perforation. The introducer needle aids in guiding the catheter for a comfortable insertion.
- Equipped with a flash-back chamber in the hub, the component acts as a green signal for the user demonstrating successful cannulization of the device inside the patient.



Auto Protection in the safety version of Cathy + I.V. Cannula involves an activated safety feature utilizing the SIP CLIP protection device. It covers the needle tip during introducer needle extraction, safeguarding healthcare workers from Needle Stick Injuries in the course of cannulation and disposal.

Colour Code	Gauge	Catheter Ext. Dia X Length(mm)	Water flow-rate (ml/min)
Orange	14G	2.20 x 45	310
Grey	16G	1.7 x 45	200
White	17G	1.5 x 45	140
Green	18G	1.2 x 38	105
		1.2 x 45	100
Pink	20G	1.0 x 32	64
Blue	22G	0.8 x 25	38
Yellow	24G	0.7 x 19	16/22
Violet	26G	0.6 x 19	12/15

Conform to ISO 10555-1 and ISO 10555-5 standard.



Scan to View Product Video

KIT KATH[®]

I.V. Cannula

Equipped with radiodetectable FEP



Features

- Designed with radio detectable FEP catheter, offering a safe and convenient method for Infusion.
- Needle is manufactured with extra sharpness for smooth penetration while a thin walled catheter results in better cannulation and improved flow of medication.
- 2way/1way I.V. Cannula equipped with wings for ease of handling, insertion, and withdrawal of cannula in/from the human body.
- Low pressure injection valve facilitates extra medication while preventing its backflow.
- The port is provided with specially designed easy to open injection Port Cap for preventing any bacterial growth.
- Angles and grooved wings offer easy fixation and prevent shifting & rolling of cannula in the patients' body.

INSTANT FLSH BK

Flash back chamber allows monitoring of rapid flash of blood after venipuncture and identification of correct catheter placement. Specially designed to prevent any spillage of blood.

Product Range

Colour Code	Gauge	Catheter Ext. Dia X Length(mm)	Water flow-rate (ml/min)
Orange	14G	2.2 x 45	310
Grey	16G	1.7 x 45	200
White	17G	1.5 x 45	140
Green	18G	1.2 x 38 1.2 x 45	105 100
Pink	20G	1.0 x 32	64
Blue	22G	0.8 x 25	38
Yellow	24G	0.7 x 19	16/22
Violet	26G	0.6 x 19	12/15

- Also available in other FEP brands
- Conform to : ISO 10555-1 & ISO 10555-5 standard

⚠ Before use check the integrity of the sealing of the pack, if the pack is previously opened or damaged then do not use.

Caution

Needle extra sharpness and thin catheter walls require lower force and less angle to body during cannulation to avoid cross puncture of vein.

For low blood pressure patients 2-3 seconds required for blood to reach flash back chamber of the needle hub.

Shelf life

The Shelf Life of the product is 5 years from manufacturing



Scan to View Product Page



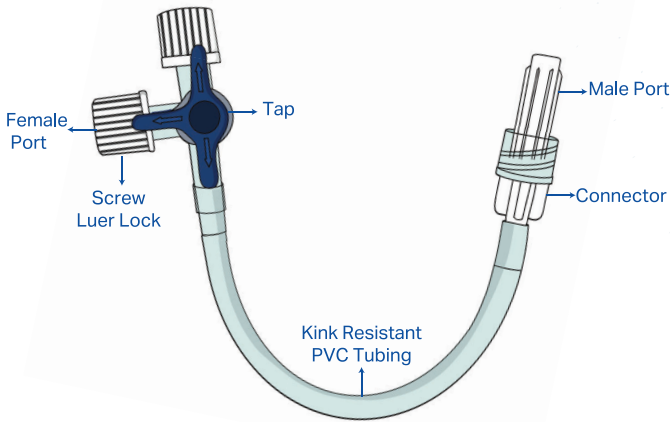
3 WAY STOP COCK

With/without extension tubing



Features

- Made of Lipid Resistant material, assisting in prevention of erosion caused by lipids and other aggressive drugs.
- Confirms movement to desired location with an audible click sound and is equipped with arrow marks on its body, indicating the direction of flow to avoid any ambiguity.
- Transparent flow channel, for easy visualization of fluids and medication.
- Equipped with two Female and one Male Luer lock port, along with caps for administration of multiple medications using a single I.V. Cannula.
- Connection meets 6% taper requirement ensuring Leak Proof design, helping with smooth procedure and has been clinically tested to withstand a pressure of up to **8 bars (115 PSI)**, paving way for high viscosity medication.
- Secure fitment, designed to fit and connect with any brand of I.V. Cannula. Available in two colors – Blue & Red.



Caution

Reuse of product may lead to cross contamination / infection.

The use of this product is restricted to qualified medical personnel.

Store in clean, dry & insect free place. Avoid exposure to acidic or corrosive fumes.

Contraindication

Product should not be used in patient with known hypersensitivity to any of the materials used. (polypropylene, polycarbonate & polyethylene)

Shelf life

The Shelf Life of the product is 5 years from manufacturing.



Scan to View Product Video

UNOLOK[®] †

Scalp Vein Infusion Set

With and Without safety



Features

- Unolok winged infusion set, with a Luer Lock connector, securely connects with infusion sets or syringes of any size to prevent leaks during medication administration.
- The transparent Luer adaptors enable visual monitoring of medicament flow. Soft, flexible wings conform to skin contours, enhancing grip and simplifying mobilization during the infusion process.
- The kink-free link tube, made of high-quality translucent PVC, allows easy content observation and instant flash back for cannulation.
- The thin-walled needle allows for a larger internal diameter, ideal for rapid infusion and high-viscosity medications.
- The needle features a short bevel and three-facet point to minimize vein perforation during insertion. Siliconized needles reduce friction, alleviate pain, and ensure comfortable insertion.
- Individually packed in transparent thermoformed peelable blister pack with PVC compound.

Protective Shield

Unolok +, our advanced Safety Winged Infusion Set, incorporates a crucial Protective Shield, guaranteeing the prevention of secondary needle sticks and device reuse. The shield automatically retracts when withdrawing the needle from the patient, covering the needle tip. This innovation ensures both non-reusability and protection for healthcare workers, reducing the risk of needle stick injuries during both usage and disposal.

Product Range

Needle Gauge	Colour Code	Needle Length		Needle Diameter (mm)
		(mm)	(Inches)	
18G	Pink	19	3/4"	1.20
19G	Cream	19	3/4"	1.10
20G	Yellow	19	3/4"	0.90
21G	Green	19	3/4"	0.80
22G	Black	19	3/4"	0.70
23G	Light Blue	19	3/4"	0.60
24G	Purple	19	3/4"	0.55
25G	Orange	19	3/4"	0.50
26G	Brown	19	3/4"	0.45
27G	Grey	19	3/4"	0.40

Caution

Do not use if the pack is previously opened or damaged.

Do not attempt to re-sterilize and use.

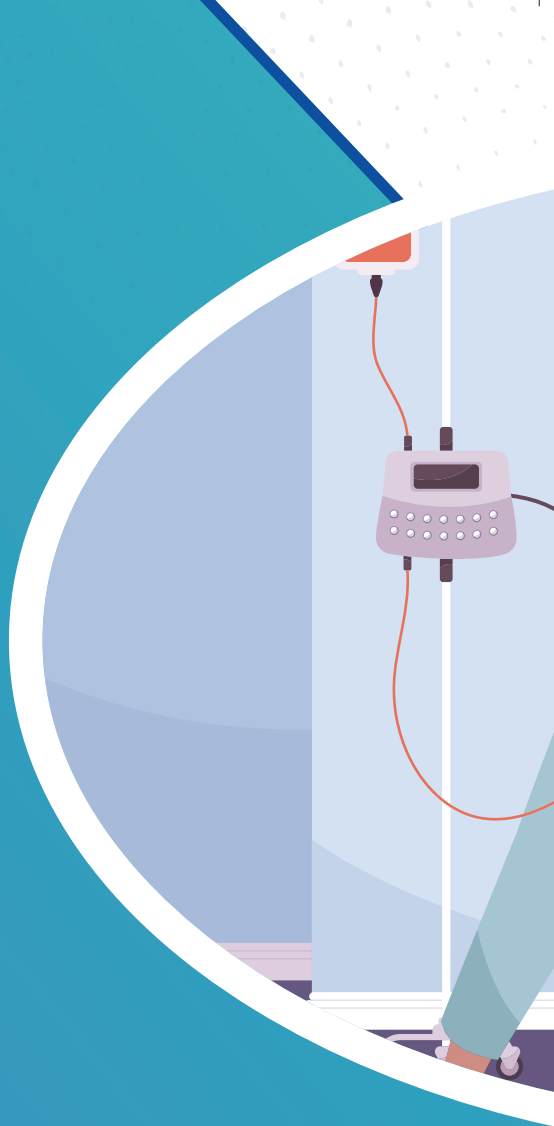
Infusion sets should not be recycled and should be disposed of preferably in sharps containers.

Shelf life

The Shelf Life of the product is 3 years from manufacturing



Scan to View Product Video



PATHOLOGY

Vaku 8 Blood Collection Tube

Vaku 8 Blood Collection Needle

Vaku 8+ Winged Blood Collection Set with/without Safety



VAKU-8™

Blood Collection Tube

An Entire Range to Meet Your Every Need



Features

- Promoting closed system use, VAKU 8 Blood Collection Tubes (BCT) ensure safe and standardized blood sample collection, preservation, and lab test preparation.
- Vacuum tubes feature a top vacuum seal creating negative pressure. This aids in the automatic blood draw as the needle pierces the vein. Tube sizes are preset for specific blood quantities needed for testing.
- The Closed System enables precise, single-prick blood collection for multiple tubes, reducing infection risk and ensuring accurate, controlled blood amounts for reliable results.
- The plastic tube is molded from quality transparent plastic for clear visibility in low humidity, preventing short molding and sample leakage.
- Manufactured on automated lines, VAKU 8 BCT comes in various colors, corresponding to specific blood collection additives, following Pathology department norms.
- Our VAKU 8 tubes undergo sterilization via Gamma Radiation and are packaged in recyclable Styrofoam bundles containing 100 tubes each.

BICAP

The Bi-Cap features an outer PE-molded cap and an inner Bromo Butyl Rubber cap. The rubber properties are carefully calibrated to prevent fragmentation, protect analyzer needles, maintain vacuum seal integrity, and ensure a secure, airtight connection with the phlebotomy needle during blood collection.



Caution

Do not use tubes after expiration date printed on the tube label.

Do not use tubes if the clear liquid solutions above and/or below the gel layer become discolored or form precipitates.

Shelf Life

The shelf life for all tubes, except Citrate, is 12 months. Citrate tubes have an 8-month shelf life from the manufacturing date.

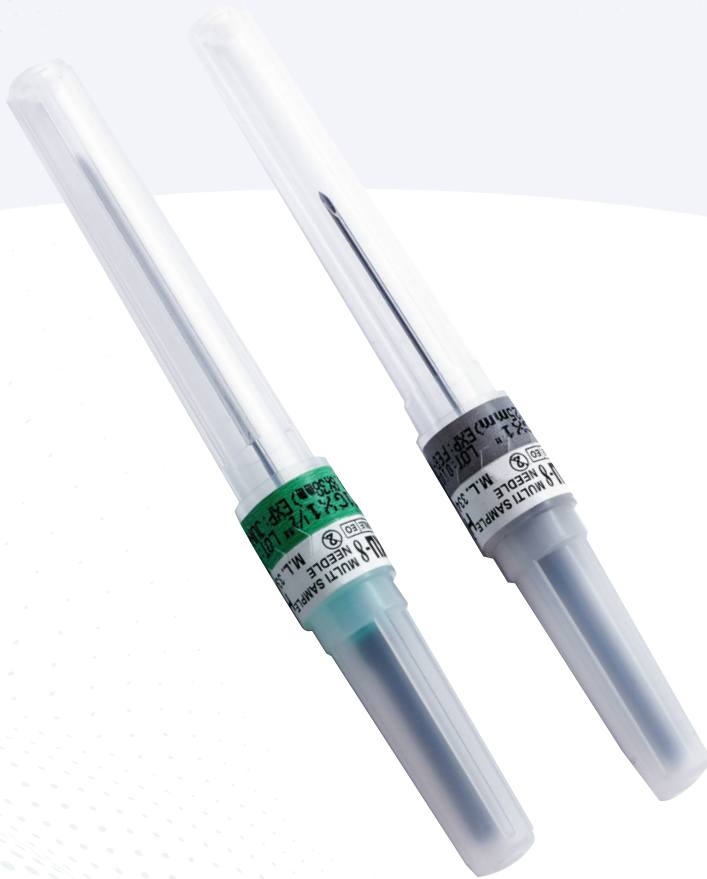


Scan to View Product Video

VAKU-8™

Blood Collection Needle

Phlebotomy made more convenient



Features

- VAKU 8 Blood Collection Needles (BCN) use high-quality stainless steel, compatible with Ethylene Oxide (EO) gas sterilization. The siliconized, short-bevel needle minimizes pain and vein perforation risk.
- Equipped with two needles and covers, it ensures a superior closed system for safety. The top cover, made of medical-grade PP, protects the piercing needle.
- To create a closed blood collection system, use them with a BCN Holder and vacuum-enabled Vaku 8 Blood Collection tubes, simplifying multi-test sample collection with a single prick.
- The needle tube sheath is a flexible rubber tube that acts as a blood stopper when the needle is withdrawn from the sample tube.
- Vaku 8 is available in 21G, 22G, and 23G with 1 and 1 ½ inch lengths, catering to various user applications.
- The cover for the lower needle is made of durable medical-grade PE, protecting the needle tube sheath without degradation over time.

Blood Collection Holders

Blood Collection Holders enhances the users' control and flexibility because of its easy-to-handle design. The translucent plastic holders pave way for easy viewing of blood collection while providing a secure connection between blood collection tubes and needles. The tube holders are universally compatible with Blood Collection Needle, Sets and Tubes. They simply screw onto the needle.

Product Range

Colour Code	Gauge	Needle Length	Needle Diameter
Green	21G	1", 1.5"	0.8 mm
Black	23G	1", 1.5"	0.7 mm
Blue	24G	1"	0.6 mm

- Ref: Company's Specification
- Colour Code: As per ISO: 6009

Method of Sterilisation

The product is sterilized by ethylene oxide gas

Warning

Do not use if the Unit is previously opened or damaged. Ensure that blood collection tube is fully pressed over the blood collection needle. Do not attempt to re-sterilize and reuse.

Blood Collection Needle should not be recycled and should be disposed, preferably in sharps containers.

Precaution

Before use check for sterility assurance and tamper evident sealing.

Shelf life

The Shelf Life of the product is 3 years from manufacturing



Scan to View Product Video

VAKU-8[®]

Winged Blood Collection Set

With and Without safety



Features

- Vaku 8 and Vaku 8+ feature flexible wings with a textured surface for a secure grip during blood collection. Pinching the wings together offers stability and control during venipuncture, aiding healthcare professionals.
- Vaku 8 and Vaku 8+ excel in treating challenging cases like pediatric and elderly patients with hard-to-find veins. They also benefit critically ill patients due to their enhanced flexibility.
- Easy to train, Vaku-8 winged blood collection set enables flashback visualization of blood upon successful contact with the vein.
- Vaku 8+ features a siliconized needle with a short bevel, reducing vein perforation risk and ensuring a comfortable, less painful insertion.
- The kink-resistant tubing, available in multiple length assures continuous flow while ensuring minimal to no wastage of blood.
- The tubing's other end consists of a second needle with a non-latex rubber sheath. It automatically retracts as the needle enters the vacuum tube stopper and recovers upon withdrawal.

Protective Shield

The more improved Safety Winged Blood Collection Set, Vaku 8+ is equipped with a protective shield ensures there are no secondary needle sticks and no reuse of device. The shield retracts while pulling the needle from the patient, covering the tip of the needle, make it not only non-reusable but also protecting the healthcare workers from any needle stick injuries during either its use or disposal.

Product Range

Colour	Gauge	Length	Packaging
Green	21G	3/4"	100 Pcs
Blue	23G	3/4"	100 Pcs
Purple	24G	3/4"	100 Pcs
Orange	25G	3/4"	100 Pcs

Caution

Do not use if the pack is previously opened or damaged

Do not attempt to re-sterilize and use

Infusion sets should not be recycled and should be disposed off preferably in sharps containers.

Inspect the tube for any damages to avoid any leakage.

Precaution

Before use check the integrity of the sealing of the pack. Tape the wings securely after insertion.

Shelf life

The Shelf Life of the product is 3 years from manufacturing



Scan to View Product Video



SURGERY

Technocut Surgical Blades

Technocut Surgical Scalpel





Surgical Blades

Incision Made Precise



Features

- Available in Carbon Steel, High Carbon Stainless Steel and Premium Swiss Stainless Steel, Techno Cut blades are produced with highest precision to deliver exceptional quality surgical blades for the medical device industry.
- Each blade is wrapped with a VCI coated paper on both its sides, and then packed in Aluminum Foil keeping them at a bay from any kinds of rust.
- The manufacturing process includes 15 crucial steps: Hardening, Polishing, Grinding, and thorough Ultrasonic cleansing. The blades maintain sharpness even after multiple cuts and undergo 100% parameter checks before Clean Room packaging.
- Universally designed, these blades are designed to fit Handle Numbers 3 and 4, being a small size and big size blade respectively.
- Various blades with different sizes, shapes, and labeled numbers are available based on surgical needs, incision locations, and usage. Miniature and Podiatry blades are also offered, and custom requirements may be accommodated.
- Sterilized with Gamma Radiation of 2.5 Mrad, the produced blades have gone through a meticulous sterilization process ensuring their conformity.

Product Range

Category	For small size fittings (Handle no. 3)	For large size fittings (Handle no. 4)	Miniature blades	Podiatry blades	Stitch Cutters
Commercial Designation No.	10, 10A, 11, 12, 12D, 13, 15, 15C	18, 19, 20, 21, 22, 23, 24, 25	6100, 6200, 6400, 6700, Minimal Incision Blade No.67	312, 313, 314, 316	—

- Conform to: HMD Specification & ISO : 7740 standard.

Caution

Don't use if already opened. Please use only if the foil is sealed properly.

Don't use a rusted blade. Check before using.

Shelf life

The Shelf Life of the product is 5 years from manufacturing



Scan to View Product Page



**techno
cut**

Surgical Scalpel

Quality and Precision Designed for a Single Use



Features

- Made from Premium Quality Swiss Stainless Steel, Techno Cut Surgical Scalpels are designed to meet high precision need for a seamless cut.
- Techno Cut Scalpels feature sharp surgical blades crafted through a 15-step process and come with a removable plastic sheath for blade protection.
- Packed on Automatic Machines, Techno Cut Scalpels are packed with Easy Peel Blister Pack in Medical Grade Paper.
- The handles have been ergonomically designed to meet surgeon's need for a comfortable hold and finer precision.
- Assembled on Fully Automated Machines equipped with sensors to confirm the attachment of surgical blades with handles inside Class 7 Clean Room.
- Sterilized with Ethylene Oxide (EO) Gas in a 12-hour cycle, they are ensured to be free from contamination. BI Testing is conducted to validate the sterilization process for microorganisms.

Product Range

Category	For small size fittings (Handle no. 3)	For large size fittings (Handle no. 4)
Commercial Designation No.	10, 11, 12, 12D, 15, 15C	20, 21, 22, 23, 24, 25

Conform to: HMD Specification & ISO : 7740 standard.

Caution

Never attempt to use a blade without a handle. Make sure replacement scalpel blades are securely attached to the handle.

Don't use excessive force or a sawing motion with a scalpel. Sharp blades are thin, which means they can easily be broken.

Never leave an open blade unattended. Cover it, retract it, dispose of it, or stow it in a safe location before turning your attention to something else.



Scan to View Product Page

Shelf life

The Shelf Life of the product is 5 years from manufacturing



**Taking care of those
who take care of us**



EC REP

Advena Ltd. Tower Business Centre,
2 nd Flr., Tower Street,
Swatar, BKR 4013 Malta

 **Hindustan Syringes and Medical
Devices Ltd.**
174, 178/25, Ballabgarh, Faridabad,
Haryana, India-121004

 **Hindustan Syringes and Medical Devices Ltd.**
99/25, Ballabgarh, Faridabad, Haryana, India-121004

 **Niraj Industries Pvt. Ltd.**
923, Sector-68, IMT, Faridabad,
Haryana-121004, India

 **Hindustan Syringes and Medical Devices Ltd.**
Jharsaintly- Jajru, Sector-59, Ballabgarh,
Faridabad, Haryana, India-121004



www.hmdhealthcare.com



hmduk@hmdhealthcare.com