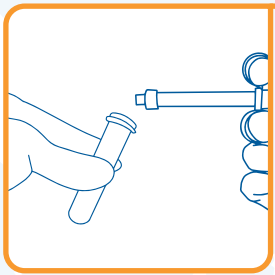


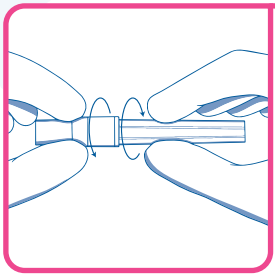
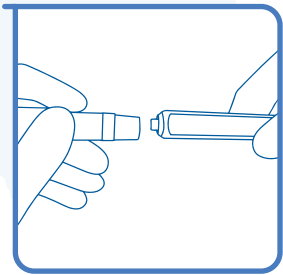
## DISPO VAN DENTAL NEEDLE (IFU)



**Step 1 :** Prepare the syringe with the cartridge as per the manufacturer's instruction.

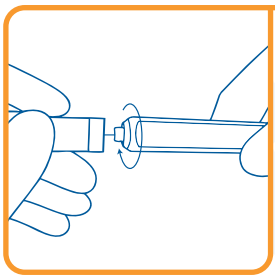
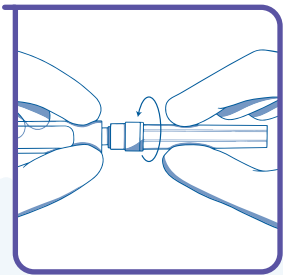
**Step 2 :** Before opening the needle, check whether the syringe nozzle has a designated fitment (imperial or metric).

Caution : Ensure the needle hub is compatible with the type of fitment of the syringe nozzle. Attempting to attach an incompatible hub may result in improper fit or possibility of leakage.



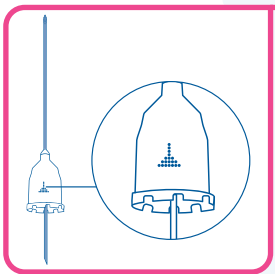
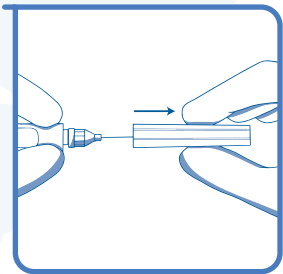
**Step 3 :** Twist the shorter cover and the longer cover of the needle in opposite directions to break the sterile sealed label.

**Step 4 :** Remove the shorter cover to reveal the butt-end of the needle by screwing it out which will get attached to the syringe.



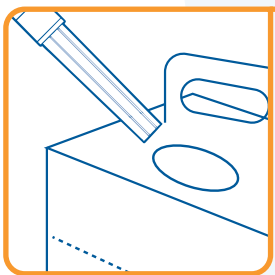
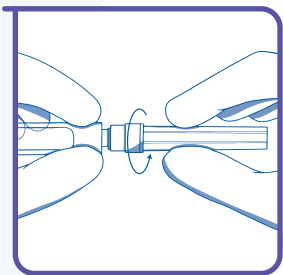
**Step 5 :** While holding the longer cover, attach the needle to the syringe. Screw the needle hub securely onto the syringe nozzle.

**Step 6 :** Just before the injection, remove the longer plastic cover to expose the patient end of the needle.



**Step 7 :** Check the bevel orientation mark on the needle hub, which indicates the bevel position to ensure an optimal insertion.

**Step 8 :** After using, carefully, unscrew the needle from the syringe using the plastic protective longer cover or an appropriate method to avoid needle stick injury.



**Step 9 :** Dispose off the used needle in a puncture-resistance container, following applicable regulatory guidelines.